

APPENDIX

-- INTENTIONALLY LEFT BLANK --

APPENDIX A – PARK INVENTORY

Name	Acreage	Type	Passive Area					Informal Active Games						Hard Surface		Seasonal										Service and Buffer																	
			Open Space	Picnic Area	Biking Trail	Hiking / Walking Trail	Dog Park	Equestrian Trails	Play Equipment	Soccer	Baseball	Softball	Football	Frisbee Golf	Golf	Canoeing	Sand Volleyball	Basketball	Tennis	Hockey	Ice Skating	Sledding	Fishing	X-C Skiing	Show Shoeing	Skate Board Park	Camping	Boating	Boat Ramp	Performance Stage	Other Building	Restrooms	Drinking Water	Parking	Picnic Shelter	Trash Receptacle	Recycling Receptacle	Telephone	Benches				
City Owned Parks and Facilities																																											
Cedar Valley	1.0	PL	●	●			●																																				
Bostrum	5.9	NP	●	●		●	●										●																										
St. John's	3.5	NP	●	●		●													●		●																						
American Legion	6.0	NP		●					○		●	●																															
Fireman's	7.5	NP	●	●				●		●	●					●																											
Cushing Memorial	8.8	CP	●	●				●													●																						
Oakwood Road Community	29.0	CP	●			●														●		●																					
Fish Hatchery Sports Complex	11.0	CP	●	●				●	●	●	●																																
Lois Jensen Nature Preserve	30.0	C/P	●			●																																					
Bleeker Street Boat Ramp	0.3	SP		●																	●																						
Fish Hatchery	3.0	SP	●	●		●								●	●						●																						
County and State Facilities																																											
Lapham Peak State Park	1022	RG	●	●	●	●		●											●																								
Nashotah County Park	443	RG	●	●	●	●	●																																				
Nagawicka County Park	416	RG	●	●	●	●		●	●				●																														
Trails																																											
Veterans Memorial River Walk	2 MI	TR			●	●																																					
Lake Country Trail	8 MI	TR			●	●																																					
Glacial Drumlin State Trail	52 MI	TR			●	●																																					
Ice Age Trail	1000 MI	TR				●																																					
Pabst Farms / Summit Trail to YMCA	3 MI	TR			●	●																																					
Cushing Park Road Trail	3 MI	TR			●	●																																					
Delafield Equestrian Trails	2 MI	TR				●		●																																			

City of Delafield

Name	Acreage	Type	Open Space	Picnic Area	Biking Trail	Hiking / Walking Trail	Dog Park	Equestrian Trails	Play Equipment	Soccer	Baseball	Softball	Football	Frisbee Golf	Golf	Canoeing	Sand Volleyball	Basketball	Tennis	Hockey	Ice Skating	Sledding	Fishing	X-C Skiing	Show Shoeing	Skate Board Park	Camping	Boating	Boat Ramp	Performance Stage	Other Building	Restrooms	Drinking Water	Parking	Picnic Shelter	Trash Receptacle	Recycling Receptacle	Telephone	Benches		
Other Facilities																																									
Dickton Park - Nashotah	8	NP	●	●		●			●	●	●	●										●									●		●	●	●	●					
Sports Commons - Town of Delafield	18	CP	●	●		●			●	●	●	●										●				●					○		●	●	●	●	●				
Cushing School		SP							●		●	●																			●	○		●	●	●	●	●			
Lake Country School		SP	●						●		●	●																			●			●	●	●	●	●			
University Lake School		SP	●							●	●	●																			●			●	●	●	●	●			
Nixon Park - Hartland		CP	●	●		●			●		●	●																●	●	●	●	●	●	●	●	●	●	●	●		
Elmhurst Park - town of Delafield		NP	●	●		●			●																						○										
Deltown Park - Town of Delafield		NP							●		●	●																			○										
Wales Community Park - Wales		CP	●	●		●			●	●	●	●		●																●	●	●	●	●	●	●	●	●	●		
St. John's Northwestern Military Academy		SP	●							●	●	●	●	●	●			●	●												●				●	●	●	●	●		
Nemahbin Lakes Boat Ramp		SP			●	●																							●		○		●	●	●	●	●	●			
Nagawaukee Lake Boat Ramp		SP																											●		●	●	●	●	●	●	●	●			
Pewaukee Lake Boat Ramp		SP																											●		●	●	●	●	●	●	●	●			
Pewaukee Yacht Club		SP																										●	●		●		●	●	●	●	●	●			
Lake Country Tennis Club		SP																										●			●		●	●	●	●	●	●			
Arrowhead High School		SP								●	●	●	●					●	●																						
Kettle Moraine High School		SP								●	●	●	●					●	●																						
Mt. Olympia Ski Resort		SP																						●																	
Natural Resources																																									
Nagawicka Lake		SP															●											●													
Bark River Northeast		SP																																							
Bark River Southwest		SP																																							
Potential Future Facilities																																									
Northeast Quadrant Small park	4	PL																																							
Northeast Quadrant Large park	8	NP																																							
Delafield Integrated Trail system		TR			●	●																													●						
Oak Street Lake Access																																									
Mulch Lot behind post office																																									
Bark River conservancy in NE quadrant																																									
Margaret Zerwekh's dam																																									
New Public Service Building																																									

Type	
PL Playlot	C/P Conservation / preservation Area
NP Neighborhood Park	TR Trails
CP Community Park	SP Special Purpose Area
RG Regional Park	

Legend	
●	Facility in Good Condition
○	Facility in Fair condition
⊗	Facility in poor condition
✓	Facility Available

APPENDIX B: ACCOMPLISHMENTS SINCE PREVIOUS 5 YEAR PLAN

Implementation of City of Delafield Parks and Recreation Five Year Plan -2004-2009

The Park and Recreation plan of action from the 2004-2009 Five Year plan was divided into short, middle, and long term goals. The following list highlights the items that were completed under the last five year plan, and also include middle and long range objectives that need to be addressed in the future. (Reference p.20-25 of the City of Delafield Parks and Recreation Plan 2004-2009)

Short and Middle Term Objectives (Items completed under the 2004-2009 Five-year plan)

St. John's-Install fishing pier

Bleeker Street-Improve boat launch

Firemen's-Install play equipment (one piece)

American Legion (leased)-Collaborate with the American Legion to remove and/or replace play equipment. Explore feasibility o installing lights on the baseball field.

Chentis Krueger Fish Hatchery Center- Install media and sound systems

Wisconsin Veterans Memorial Riverwalk- Construct pathways, bridges and boardwalk. Complete landscaping and install signs.

Lois Jensen Nature Preserve- Install park sign and improve parking. Clarify strategic purpose and future development options for park.

Cushing Memorial-Construct restroom facilities, install flagpole

Bostrom- Extend tennis court fencing, repave walking path

Oakwood Road Community-Create master plan

Bike Lanes/Paths- Amend city thoroughfare plan to include transportation needs for bicyclists and pedestrians

Middle and Long Terms Objectives (Items not yet completed under the 2004-2009 Five-year plan)

Bostrom-Re-grade/improve playing field

Firemen's- Install additional play equipment

Fish Hatchery Sports Complex-Renovate baseball and soccer fields

Oakwood Road Community-Phased construction

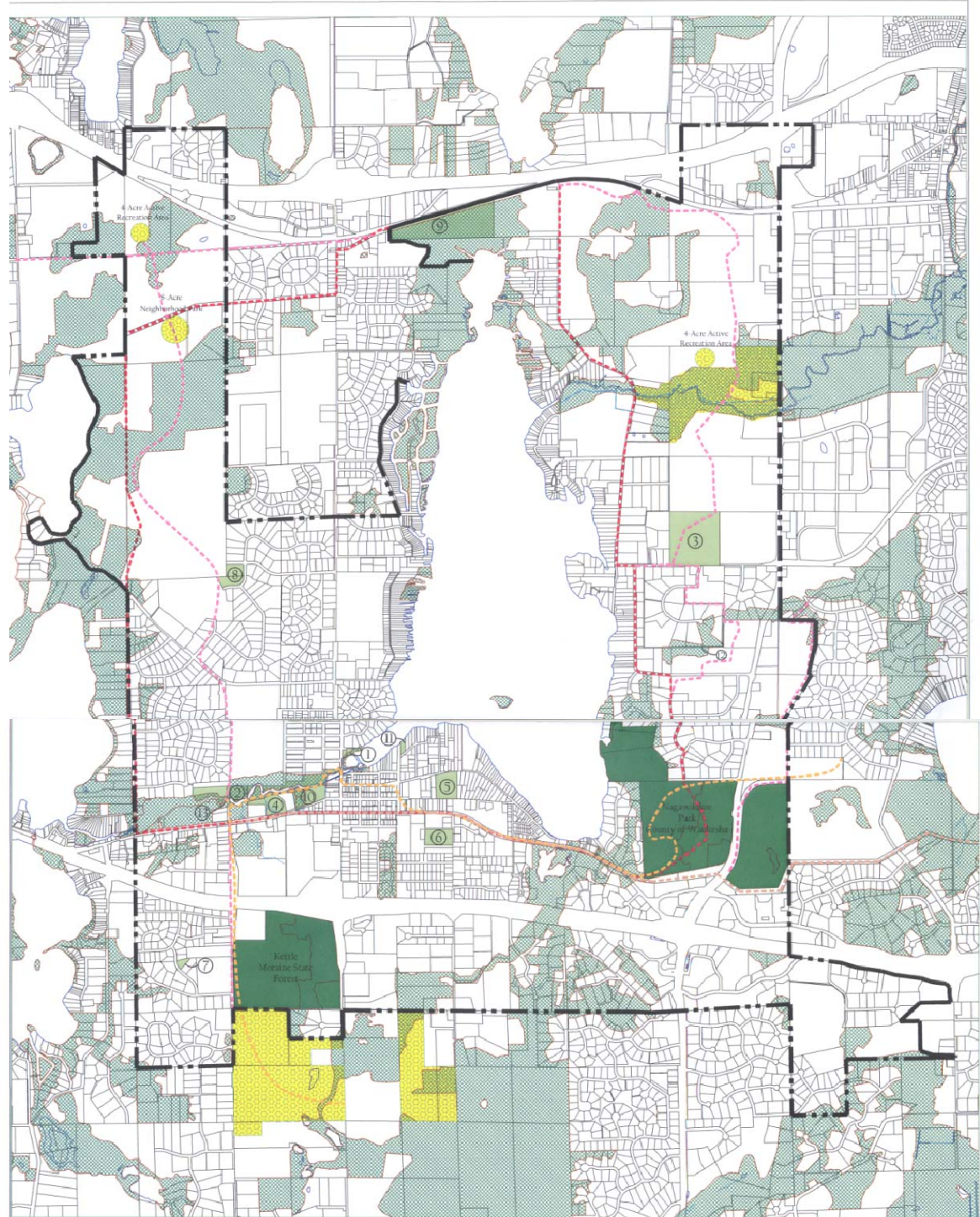
Bike Lanes/Paths-Identify and construct bicycle access between downtown Delafield and the

New Oakwood Road Community Park. Begin to acquire right-of-way access.

Equestrian Trail-Survey trail, update boundary markers, improve drainage on southeast hill

Aquatic Center-Investigate cost and feasibility of creating an aquatic center

APPENDIX C: PARK MAP



CITY OF DELAFIELD PARK & OPEN SPACE PLAN

- | | |
|----------------------------------------------------------------------------------------------------------------------------------------------|-------------------------------------------|
| 1. St. John's Park | 7. Cedar Valley Park |
| 2. Cushing Memorial Park
Chertis-Kraeger Community Senior Center
Fish Hatchery Sports Complex
Wisconsin Veterans Memorial Riverwalk | 8. Boston Memorial Park |
| 3. Community Park | 9. Lois Jensen Nature Preserve |
| 4. Fish Hatchery Sports Complex | 10. Chertis-Kraeger Community Center |
| 5. Firemen's Park | 11. Blecker Street Four Launch |
| 6. American Legion Field (Lease) | 12. Equestrian Trail |
| | 13. Wisconsin Veterans Memorial Riverwalk |

LEGEND:

City Park	Proposed Park (City jurisdiction, with existing Comprehensive Plan)
County/State Land	Environmental Corridors & Natural Resource Areas
Ice Age Trail	
Lake Circle Route	
Proposed Trail	
County Trail (Existing solid, proposed dashed)	
Lake Country Trail	

Date: 7/2016
 Revision: 01/2017 (to include 2017 Delafield Comprehensive Plan)
 12101 Main Street, Suite 200
 Delafield, WI 53018