



---

*Cedar Valley Park is a small neighborhood park in the SW corner of the City with very basic amenities.*

---

## *Cedar Valley Park*

### OVERVIEW / CURRENT STATUS

Cedar Valley Park is a one acre neighborhood park that provides very basic park amenities such as child play equipment, open space for recreation and a picnic area.

#### Short Term Requirements

- Some trees need replacing due to damage by vandals and deer rubs
- Play equipment should be evaluated for replacement/enhancement
- Park sign is functional but is in line to be updated with current theme to match other City Park signage

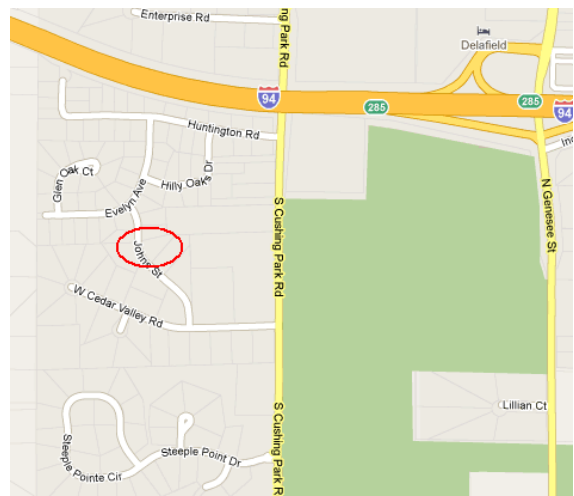
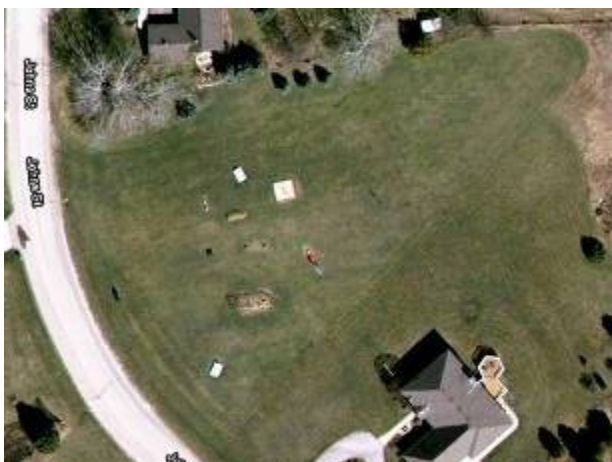
#### Mid Term Enrichments

- Landscaping to shield adjacent properties and enhance the park's appearance
- Walking/biking/rollerblading loop would be simple enhancement
- More significant play structure with consideration for a park theme
- Wildflower/prairie edging along perimeter
- Volleyball net/sand

#### Long Term Vision

- Theme and other enhancements should be considered given specific neighborhood input
- Small powered shelter for neighborhood gatherings
- Connector trail route to nearby Cushing Road Bike Path

### PARK MAP/LOCATION



PICTURES



## Summary

Cedar Valley Park provides a minimal service level to the neighboring properties. Despite its mere one acre footprint, it should not be left void of character. Small short term investments in enhanced landscaping and some theme based equipment upgrades can provide an economical boost to Cedar Valley Park's appeal.

---

### *Ranked Priorities*

- Tree replacement/addition
- Play equipment should be evaluated for replacement/enhancement
- Specific neighborhood input for ideas to enhance the park
- Walking/biking/rollerblading loop
- Park sign is functional but is in line to be updated with current theme to match other City Park signage
- Landscaping upgrade